



# Clearance Pricing Blowout!

## Cutting Edge Surplus

No other discounts apply. FOB Kronenwetter.



### ATTENTION Service Dept Manager: Now is the Time to Stock Up with the Woods® Cutting Edge Surplus Program!

Updated Cutting Edge List --- This list supersedes previous announcement. Blow out prices are still in effect, but we have removed those edges with zero inventory...Order your replacements TODAY!

**Who can participate:** ALL POP LEVEL WOODS CONSTRUCTION DEALERS

**Program Starts:** September 1, 2009 (while quantities last).

Woods Equipment Company is pleased to announce special reduced blow out prices on surplus cutting edges. Stock up on the popular cutting edges needed by your customers and take advantage of this special blow-out pricing while quantities last!

■ **Skid Steer** ■ **Backhoes** ■ **Wheel Loaders** ■ **Excavators**

#### TERMS & CONDITIONS

1. All POP level construction dealers that are current and in good standing with Woods Equipment Company ("Woods") are eligible to participate in this program.
2. No other discounts or programs apply to these blowout prices.
3. This program starts September 1, 2009 (while quantities last).
4. This special blow out pricing applies only to the Woods service parts listed with this program announcement.
5. Program is based on a "while supplies last" condition. No additional edges will be made available after current stock is depleted.
6. Net (30) days payment terms apply.
7. Freight F.O.B. Kronenwetter, WI.
8. Woods Equipment Company reserves the right to limit quantities and to modify or discontinue this program at any time.

Please send any questions or comments to [CEMarketing@WoodsEquipment.com](mailto:CEMarketing@WoodsEquipment.com).

[www.WoodsEquipment.com](http://www.WoodsEquipment.com)

1-800-848-3447



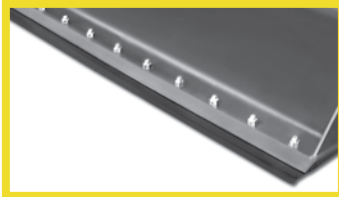
# Clearance Pricing Blowout!

## Cutting Edge Surplus

No other discounts apply. FOB Kronenwetter.

### CAT

Part #	Blow-Out Price	Description	Used In
C260001	\$5.72	EDGE PROTECTOR, ARROW, 8J8141, CAT, 0.75" X 0.50"	BACKHOE BUCKET FOR CAT 322 "S" 2BS36
3000913	\$429.82	EDGE, REVERSIBLE, 1.125" X 9.75" X 6"	REVERSIBLE 60" CUTTING EDGE KIT
C261318	\$399.85	SIDE CUTTER, LEFT HAND, 8J9614, CAT	CAT 8J SIDE CUTTER KIT
C261319	\$399.85	SIDE CUTTER, RIGHT HAND, 8J9615, CAT	CAT 8J SIDE CUTTER KIT
19326301	\$343.64	EDGE, CENTER, 1" X 10" X 76"	4-IN-1 BUCKET
C261269	\$207.68	SIDE CUTTER, 9J9540, CAT 174-8044	CAT 330 SIDE CUTTER KIT
19381984	\$67.90	EDGE, BOLT-ON, DOUBLE BEVEL FRONT, 0.625" X 6" X 82"	84" 4-IN-1 BUCKET
C39836	\$366.19	EDGE, REVERSIBLE END, 1U0761, CAT	134.05" 5.75, 6.0, 7.0, & 7.5 CU. YD. BUCKET FOR CAT 980C, 980G, & HYUNDAI HL760
C252700	<b>SOLD OUT</b>	SIDE CUTTER, T1156AHX, HENSLEY	CAT BUCKET
C340876	\$462.39	EDGE, REVERSIBLE, CENTER, 1" X 10" X 54"	102" 2.5, 3.0, 3.25, & 5.0 CU. YD. BUCKET FOR JD544, CASE 621D, TEREX TXL200
C261475	\$624.78	SIDE CUTTER, RIGHT HAND, 8J9825, CAT	CAT SIDE CUTTER KIT 8J9825/26
C261476	\$624.78	SIDE CUTTER, LEFT HAND, 8J9826, CAT	CAT SIDE CUTTER KIT 8J9825/26
C260826	\$297.52	EDGE, REVERSIBLE, CENTER, 1U0292, CAT	103.9" 2.5 OR 3.0 CU. YD. BUCKET FOR CAT 938G, ACS50, OR KOMATSU WA
C261268	\$230.20	SIDE CUTTER, 9J9539, CAT	SIDE CUTTER KIT FOR CAT 330
19381988	\$80.67	EDGE, BOLT-ON, DOUBLE BEVEL FRONT, 0.625" X 6" X 86"	88" 4-IN-1 BUCKET
19311603	<b>SOLD OUT</b>	EDGE, DOUBLE BEVEL FRONT, 0.625" X 8" X 86"	86" LOADER BUCKET FOR CAT
C260810	\$313.20	SIDE CUTTER, 7Y0357, CAT	SIDE CUTTER KIT FOR CAT
C260811	\$313.20	SIDE CUTTER, 7Y0358, CAT	SIDE CUTTER KIT FOR CAT
C261477	\$146.09	BLADE, 4T6664, CAT	SIDE CUTTER KIT FOR CAT 8J9825/26
C260816	\$138.94	SIDE CUTTER, RIGHT HAND, 7Y0204, CAT	SIDE CUTTER KIT FOR CAT 7Y
C261461	\$266.78	SIDE CUTTER, 096-4747, CAT	SIDE CUTTER KIT FOR CAT 320
19381986	<b>SOLD OUT</b>	EDGE, BOLT-ON, DOUBLE BEVEL FRONT, 0.625" X 6" X 84"	86" 4-IN-1 BUCKET 86"
19362792	\$111.58	EDGE, BOLT-ON, DOUBLE BEVEL FRONT, 0.625" X 6" X 88"	4-IN-1 BUCKET FOR JD304J, TEREX/FERMEC 760, 860, 960, JCB
19131205	\$158.62	EDGE, BOLT-ON, DOUBLE BEVEL FRONT, 0.625" X 8" X 88"	4-IN-1 BUCKET
19131203	\$144.09	EDGE, BOLT-ON, DOUBLE BEVEL FRONT, 0.625" X 8" X 80"	4-IN-1 BUCKET





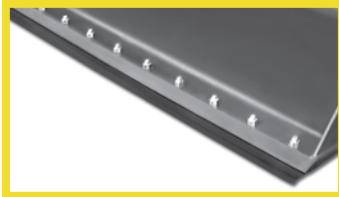
# Clearance Pricing Blowout!

## Cutting Edge Surplus

No other discounts apply. FOB Kronenwetter.

### CAT (continued)

Part #	Blow-Out Price	Description	Used In
H808	<b>\$92.56</b>	EDGE, SCRAPER, 0.625" X 8" X 76"	SCRAPER
E10021	<b>\$75.47</b>	EDGE, DOUBLE BEVEL CORNER, 0.50" X 6" X 84"	84" SCRAPER
C10760	<b>SOLD OUT</b>	BIT, CORNER, 0.75" X 6" X 12.50"	100.4", 102", 105.9", 106.3" 2.5, 3.0, 3.25, 3.5 CU. YD. BUCKET FOR CASE 621, 721; JD624H; KOMATSU WA, CAT
H933	<b>\$145.49</b>	EDGE, DOUBLE BEVEL CORNER, 0.63" X 8" X 96"	SCRAPER
52679	<b>\$144.59</b>	EDGE, REVERSIBLE, 0.625" X 8" X 86"	84" 1.6 CU. YD. BUCKET FOR TEREX SKL845 & KOMATSU, CAT
19145602	<b>\$206.19</b>	EDGE, DRILLED, DOUBLE BEVEL, 0.75" X 8" X 96"	4-IN-1 BUCKET
19299404	<b>SOLD OUT</b>	EDGE, DOUBLE BEVEL FRONT, 0.75" X 8" X 74"	102" 4-IN-1 BUCKET FOR JD544J & JD544K, CASE 621D, 721E, VOLVO L70
C39673	<b>SOLD OUT</b>	EDGE, REVERSIBLE, 1" X 10" X 96"	
C319541	<b>SOLD OUT</b>	EDGE, REVERSIBLE, END, 1.25" X 10" X 30"	112" 4.0 & 4.5 CU. YD. BUCKET FOR CASE 621B, 621D; JD 544H; KOMATSU WA250-5
C30951	<b>SOLD OUT</b>	SHOE, WEAR, 1.50" X 8" X 18"	104", 112", & 134" 3.0, 3.5, 4.0, 4.25, 4.5, 6.0, 6.25, 6.5, & 7.5 CU. YD. BUCKET FOR CASE 621D, 721D, 821C; JD544H; VOLVO L70-L90QC; JRB 416; KOMATSU 500-1, WA500-3; HYUNDAI HL760, CAT
C319540	<b>SOLD OUT</b>	EDGE, REVERSIBLE, CENTER, 1.25" X 10" X 54"	112" 4.0 & 4.5 CU. YD. BUCKET FOR CASE 621B, 621D; JD544H; KOMATSU WA250-5, CAT
C38353	<b>\$355.44</b>	EDGE, REVERSIBLE, END, 1.375" X 13" X 24"	100" & 106" 2.5 & 3.0 CU. YD. BUCKET FOR JRB 416; KOMATSU WA250; DRESSER 520C, CAT
C17883	<b>\$173.56</b>	EDGE, REVERSIBLE, END, 1" X 10" X 26"	102" 2.0, 2.25, 2.5, & 3.0 CU. YD. BUCKET FOR CASE 521D & 621B, CAT
C17882	<b>SOLD OUT</b>	EDGE, REVERSIBLE, CENTER, 1" X 10" X 50"	102" 2.0, 2.25, 2.5, & 3.0 CU. YD. BUCKET FOR CASE 521D & 621B, CAT
3003717	<b>\$266.69</b>	EDGE, REVERSIBLE, END, 1" X 8.25" X 16"	134" 6.5 CU. YD. BUCKET FOR CAT
19131211	<b>SOLD OUT</b>	EDGE, BOLT-ON, DOUBLE BEVEL FRONT, 0.625" X 8" X 90"	88" LOADER BUCKET





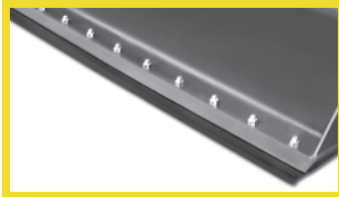
# Clearance Pricing Blowout!

## Cutting Edge Surplus

No other discounts apply. FOB Kronenwetter.

### KOMATSU

Part #	Blow-Out Price	Description	Used In
C251613	\$471.24	SIDE CUTTER, T1156A, ESCO	ESCO 6" 'M' STYLE SIDE CUTTER KIT
3000913	\$429.82	EDGE, REVERSIBLE, 1.125" X 9.75" X 6"	REVERSIBLE 60" CUTTING EDGE KIT
C251615	\$471.24	SIDE CUTTER, T1157A, ESCO	ESCO 6" 'M' STYLE SIDE CUTTER KIT
4B12938	\$355.40	EDGE, BOLT-ON, 1" X 10" X 64"	
19362796	\$127.82	EDGE, BOLT-ON, DOUBLE BEVEL FRONT, 0.625" X 6" X 92"	96" 4-IN-1 BUCKET FOR KOMATSU WB146
C252700	<b>SOLD OUT</b>	SIDE CUTTER, T1156AHX, HENSLEY	KOMATSU
5A2304	\$699.70	EDGE, BOLT-ON, CENTER, 1.25" X 12" X 62"	112" 6.5 CU. YD. HEAVY DUTY BUCKET FOR KAWASAKI 95Z4, KOMATSU
19299201	\$193.95	EDGE, DOUBLE BEVEL FRONT, 0.75" X 8" X 76"	
19381992	\$84.44	EDGE, BOLT-ON, DOUBLE BEVEL FRONT, 0.625" X 6" X 90"	92" 4-IN-1 BUCKET FOR JCB 212 W/Q-FIT, NEW HOLLAND W/BOE, FERMEC TLK
C252701	\$439.39	SIDE CUTTER, T1157AHX, HENSLEY	6" HENSLEY "M" SIDE CUTTER
C10760	<b>SOLD OUT</b>	BIT, CORNER, 0.75" X 6" X 12.50"	100.4", 102", 105.9", 106.3" 2.5, 3.0, 3.25, 3.5 CU. YD. BUCKET FOR CASE 621, 721; JD624H; KOMATSU WA
C319541	<b>SOLD OUT</b>	EDGE, REVERSIBLE, END, 1.25" X 10" X 30"	112" 4.0 & 4.5 CU. YD. BUCKET FOR CASE 621B, 621D; JD 544H; KOMATSU WA250-5
C30951	<b>SOLD OUT</b>	SHOE, WEAR, 1.50" X 8" X 18"	104", 112", & 134" 3.0, 3.5, 4.0, 4.25, 4.5, 6.0, 6.25, 6.5, & 7.5 CU. YD. BUCKET FOR CASE 621D, 721D, 821C; JD544H; VOLVO L70-L90QC; JRB 416; KOMATSU 500-1, WA500-3; HYUNDAI HL760
C319540	<b>SOLD OUT</b>	EDGE, REVERSIBLE, CENTER, 1.25" X 10" X 54"	112" 4.0 & 4.5 CU. YD. BUCKET FOR CASE 621B, 621D; JD544H; KOMATSU WA250-5
C38353	\$355.44	EDGE, REVERSIBLE, END, 1.375" X 13" X 24"	100" & 106" 2.5 & 3.0 CU. YD. BUCKET FOR JRB 416; KOMATSU WA250; DRESSER 520C
C17883	\$173.56	EDGE, REVERSIBLE, END, 1" X 10" X 26"	102" 2.0, 2.25, 2.5, & 3.0 CU. YD. BUCKET FOR CASE 521D & 621B, KOMATSU
C17882	<b>SOLD OUT</b>	EDGE, REVERSIBLE, CENTER, 1" X 10" X 50"	102" 2.0, 2.25, 2.5, & 3.0 CU. YD. BUCKET FOR CASE 521D & 621B, KOMATSU
3003717	\$266.69	EDGE, REVERSIBLE, END, 1" X 8.25" X 16"	134" 6.5 CU. YD. BUCKET





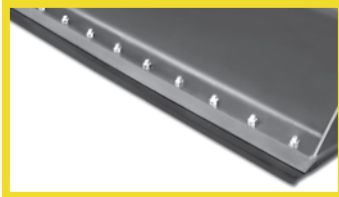
# Clearance Pricing Blowout!

## Cutting Edge Surplus

No other discounts apply. FOB Kronenwetter.

### JOHN DEERE

Part #	Blow-Out Price	Description	Used In
C251525	\$4,478.15	EDGE, CE17877-6B, ESCO, 28" C-29 LIP	30" CAST LIP BACKHOE BUCKET FOR DEERE 450LC
C251613	\$471.24	SIDE CUTTER, T1156A, ESCO	ESCO 6" 'M' STYLE SIDE CUTTER KIT
3000913	\$429.82	EDGE, REVERSIBLE, 1.125" X 9.75" X 6"	REVERSIBLE 60" CUTTING EDGE KIT
C251615	\$471.24	SIDE CUTTER, T1157A, ESCO	ESCO 6" 'M' STYLE SIDE CUTTER KIT
192949	\$369.71	EDGE, BOLT-ON, 96"	96" 4-IN-1 LOADER BUCKET FOR JD510D & JD710G
C340877	\$261.95	EDGE, REVERSIBLE END, 1" X 10" X 26"	102" 2.5 & 3.0 CU. YD. BUCKET FOR CASE 621D, TEREX TXL200, 5.0 CU. YD. JD544
19324101	\$391.35	EDGE, BOLT-ON, FRONT, 6 HOLE, 1" X 8" X 72"	4-IN-1 BUCKET FOR JD344J W/EURO COUPLER
19326301	\$343.64	EDGE, CENTER, 1" X 10" X 76"	4-IN-1 BUCKET FOR CASE 521D
19362796	\$127.82	EDGE, BOLT-ON, DOUBLE BEVEL FRONT, 0.625" X 6" X 92"	96" 4-IN-1 BUCKET FOR KOMATSU WB146
19381984	\$67.90	EDGE, BOLT-ON, DOUBLE BEVEL FRONT, 0.625" X 6" X 82"	84" 4-IN-1 BUCKET
19131201	\$120.38	EDGE, BOLT-ON, DOUBLE BEVEL FRONT, 0.625" X 8" X 66"	LOADER BUCKET
C252700	<b>SOLD OUT</b>	SIDE CUTTER, T1156AHX, HENSLEY	JD
C340876	\$462.39	EDGE, REVERSIBLE, CENTER, 1" X 10" X 54"	102" 2.5, 3.0, 3.25, & 5.0 CU. YD. BUCKET FOR JD544, CASE 621D, TEREX TXL200
19299303	\$177.64	EDGE, DOUBLE BEVEL FRONT, 0.75" X 8" X 84"	112" 4-IN-1 BUCKET FOR CASE 821E W/V29
3001482	\$116.37	EDGE, REVERSIBLE, 1" X 10" X 12"	105.9" 3.5 CU. YD. BUCKET FOR JD624G
5A2304	\$699.70	EDGE, BOLT-ON, CENTER, 1.25" X 12" X 62"	112" 6.5 CU. YD. HEAVY DUTY BUCKET FOR KAWASAKI 95Z4, JD
C318132	\$367.04	EDGE, REVERSIBLE, CENTER, 1" X 10" X 48"	112" 4.0, 4.5, 5.0, 5.5 CU. YD. BUCKET FOR JD544G, JD624J, JD644C, JD644H
19299201	\$193.95	EDGE, DOUBLE BEVEL FRONT, 0.75" X 8" X 76"	
19381992	\$84.44	EDGE, BOLT-ON, DOUBLE BEVEL FRONT, 0.625" X 6" X 90"	92" 4-IN-1 BUCKET FOR JCB 212 W/Q-FIT, NEW HOLLAND W/BOE, FERMEC TLK
C324724	\$332.08	EDGE, REVERSIBLE, END, 1" X 11" X 38"	4.55 CU. YD. BUCKET FOR KOMATSU WA250-5
19299304	\$190.91	EDGE, DOUBLE BEVEL FRONT, 0.75" X 8" X 84"	112" 4-IN-1 BUCKET FOR CASE 821E W/V29, JD
H922	\$109.71	EDGE, 0.63" X 8" X 72"	72" 4X2 SCRAPER





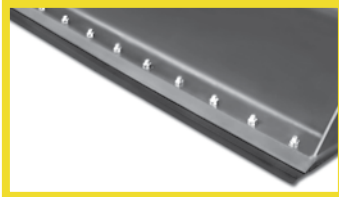
# Clearance Pricing Blowout!

## Cutting Edge Surplus

No other discounts apply. FOB Kronenwetter.

### JOHN DEERE (continued)

Part #	Blow-Out Price	Description	Used In
C34769	<b>SOLD OUT</b>	EDGE, REVERSIBLE, 1" X 10" X 50"	48" DITCH BUCKET FOR JD490E; HITACHI EX150, ZX135; CAT 314, 315C; VOLVO S6
19131223	<b>\$84.34</b>	EDGE, BOLT-ON, DOUBLE BEVEL FRONT, 0.625" X 8" X 52"	51" 0.50 CU. YD. BUCKET FOR JD210LE; CASE 480, 580K; NH 545A, 545D
E16021	<b>\$37.48</b>	EDGE, DOUBLE BEVEL CORNER, 0.50" X 6" X 36"	36" BUCKET FOR LANDSCAPER
E13021	<b>\$32.43</b>	EDGE, DOUBLE BEVEL CORNER, 0.50" X 6" X 48"	48" BUCKET FOR LANDSCAPER
19131212	<b>\$150.28</b>	EDGE, BOLT-ON, DOUBLE BEVEL FRONT, 0.625" X 8" X 84"	LOADER BUCKET
19381988	<b>\$80.67</b>	EDGE, BOLT-ON, DOUBLE BEVEL FRONT, 0.625" X 6" X 86"	88" 4-IN-1 BUCKET
19145601	<b>\$272.50</b>	EDGE, BOLT-ON, 0.75" X 8" X 94"	LOADER BUCKET
5A2305	<b>\$290.20</b>	EDGE, BOLT-ON, END, 1.5" X 12" X 26"	112.6" 6.50 HEAVY DUTY CU. YD. BUCKET FOR KAWASAKI 95Z4
19381996	<b>\$130.12</b>	EDGE, BOLT-ON, DOUBLE BEVEL FRONT, 0.625" X 6" X 94"	96" 4-IN-1 BUCKET
192990	<b>\$51.65</b>	EDGE, DOUBLE BEVEL FRONT, 0.75" X 10" X 10"	
19127403	<b>\$184.25</b>	EDGE, DOUBLE BEVEL FRONT, 0.75" X 8" X 90"	LOADER BUCKET
19326401	<b>\$182.61</b>	EDGE, DOUBLE BEVEL FRONT, 1" X 10" X 46"	4-IN-1 BUCKET
19131222	<b>\$152.63</b>	EDGE, BOLT-ON, DOUBLE BEVEL FRONT, 0.625" X 8" X 88"	86" LOADER BUCKET
19311603	<b>SOLD OUT</b>	EDGE, DOUBLE BEVEL FRONT, 0.625" X 8" X 86"	86" LOADER BUCKET FOR JD210LE
19131206	<b>\$137.65</b>	EDGE, BOLT-ON, DOUBLE BEVEL FRONT, 0.625" X 8" X 78"	LOADER BUCKET
19406678	<b>\$131.04</b>	EDGE, 0.625" X 8" X 78"	4-IN-1 BUCKET
19274503	<b>\$41.54</b>	EDGE, BOLT-ON, DOUBLE BEVEL FRONT, 0.625" X 6" X 56"	CUTTING EDGE KIT
C335262	<b>\$213.25</b>	EDGE, REVERSIBLE, 0.75" X 10" X 24"	
19381986	<b>SOLD OUT</b>	EDGE, BOLT-ON, DOUBLE BEVEL FRONT, 0.625" X 6" X 84"	86" 4-IN-1 BUCKET 86"
19131220	<b>\$108.51</b>	EDGE, BOLT-ON, DOUBLE BEVEL FRONT, 0.625" X 8" X 92"	LOADER BUCKET
193684	<b>SOLD OUT</b>	EDGE, BOLT-ON, 0.75" X 8" X 96"	LOADER BUCKET





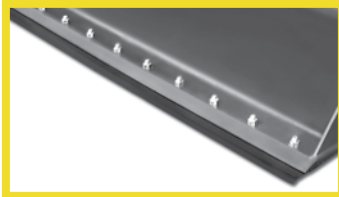
# Clearance Pricing Blowout!

## Cutting Edge Surplus

No other discounts apply. FOB Kronenwetter.

### JOHN DEERE (continued)

Part #	Blow-Out Price	Description	Used In
19362792	<b>\$111.58</b>	EDGE, BOLT-ON, DOUBLE BEVEL FRONT, 0.625" X 6" X 88"	4-IN-1 BUCKET FOR JD304J, TEREX/FERMEC 760, 860, 960, JCB
19131205	<b>\$158.62</b>	EDGE, BOLT-ON, DOUBLE BEVEL FRONT, 0.625" X 8" X 88"	4-IN-1 BUCKET
19131203	<b>\$144.09</b>	EDGE, BOLT-ON, DOUBLE BEVEL FRONT, 0.625" X 8" X 80"	4-IN-1 BUCKET
19310502	<b>\$256.36</b>	EDGE, DOUBLE BEVEL FRONT, 1" X 8" X 82"	4-IN-1 BUCKET FOR JD444J
E18021	<b>\$44.36</b>	EDGE, DOUBLE BEVEL CORNER, 0.50" X 6" X 54"	54" SCRAPER FOR KUBOTA
19311602	<b>\$186.83</b>	EDGE, DOUBLE BEVEL FRONT, 0.75" X 8" X 92"	48" & 92" LOADER BUCKET FOR JD210LE & JD410D; JRB PROFILE 09
H808	<b>\$92.56</b>	EDGE, SCRAPER, 0.625" X 8" X 76"	SCRAPER
19362778	<b>\$137.52</b>	EDGE, DOUBLE BEVEL FRONT, 0.625" X 6" X 74"	78" 4-IN-1 BUCKET
E14021	<b>\$41.05</b>	EDGE, DOUBLE BEVEL CORNER, 0.50" X 6" X 60"	60" & 84" SCRAPER
E10021	<b>\$75.47</b>	EDGE, DOUBLE BEVEL CORNER, 0.50" X 6" X 84"	84" SCRAPER
19131204	<b>\$150.89</b>	EDGE, BOLT-ON, DOUBLE BEVEL FRONT, 0.625" X 8" X 84"	4-IN-1 BUCKET
H914	<b>\$129.44</b>	EDGE, SCRAPER, 0.625" X 8" X 84"	84" 4X2 SCRAPER FOR CASE 570MXT
C38352	<b>\$822.12</b>	EDGE, REVERSIBLE, CENTER, 1.375" X 13" X 60"	100" & 106" 2.5, 3.0, & 4.0 CU. YD. BUCKET FOR JRB 416, KOMATSU WA250, DRESSER 520C
19362788	<b>\$135.29</b>	EDGE, BOLT-ON, DOUBLE BEVEL FRONT, 0.625" X 6" X 84"	88" 4-IN-1 BUCKET FOR JD244J & 304J; TEREX/FERMEC LT100, 760, 860, & 960; JCB QC 19M
19299403	<b>\$146.62</b>	EDGE, DOUBLE BEVEL FRONT, 0.75" X 8" X 74"	102" 4-IN-1 BUCKET FOR JD444J, JD544K, JD544J; CASE 621D; VOLVO L70
C252701	<b>\$439.39</b>	SIDE CUTTER, T1157AHX, HENSLEY	6" HENSLEY "M" SIDE CUTTER
19406673	<b>\$123.28</b>	EDGE, 0.625" X 8" X 72"	4-IN-1 BUCKET
C10760	<b>SOLD OUT</b>	BIT, CORNER, 0.75" X 6" X 12.50"	100.4", 102", 105.9", 106.3" 2.5, 3.0, 3.25, 3.5 CU. YD. BUCKET FOR CASE 621, 721; JD624H; KOMATSU WA
E02021	<b>\$59.14</b>	EDGE, DOUBLE BEVEL CORNER, 0.50" X 6" X 72"	72" SCRAPER
H933	<b>\$145.49</b>	EDGE, DOUBLE BEVEL CORNER, 0.63" X 8" X 96"	SCRAPER





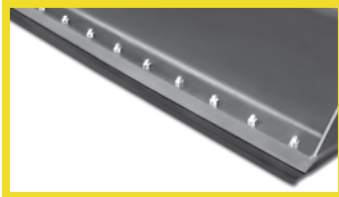
# Clearance Pricing Blowout!

## Cutting Edge Surplus

No other discounts apply. FOB Kronenwetter.

### JOHN DEERE (continued)

Part #	Blow-Out Price	Description	Used In
19131213	<b>\$169.54</b>	EDGE, BOLT-ON, 0.625" X 8" X 86"	72", 73", & 84" 1.0 CU. YD. LOADER BUCKET FOR JD210LE; CASE W11, 21D, 570; VOLVO L25B; TEREX TL80
52679	<b>\$144.59</b>	EDGE, REVERSIBLE, 0.625" X 8" X 86"	84" 1.6 CU. YD. BUCKET FOR TEREX SKL845 & KOMATSU
19145602	<b>\$206.19</b>	EDGE, DRILLED, DOUBLE BEVEL, 0.75" X 8" X 96"	4-IN-1 BUCKET
19299404	<b>SOLD OUT</b>	EDGE, DOUBLE BEVEL FRONT, 0.75" X 8" X 74"	102" 4-IN-1 BUCKET FOR JD544J & JD544K, CASE 621D, 721E, VOLVO L70
C626737	<b>SOLD OUT</b>	EDGE, REVERSIBLE, 1.50" X 18" X 54"	54" BUCKET FOR CASE 621B
C28400	<b>SOLD OUT</b>	EDGE, REVERSIBLE, 1.25" X 10" X 86"	JD
C309048	<b>SOLD OUT</b>	EDGE, REVERSIBLE, 1.25" X 10" X 74"	72" DITCH BUCKET
C39673	<b>SOLD OUT</b>	EDGE, REVERSIBLE, 1" X 10" X 96"	JD
C319541	<b>SOLD OUT</b>	EDGE, REVERSIBLE, END, 1.25" X 10" X 30"	112" 4.0 & 4.5 CU. YD. BUCKET FOR CASE 621B, 621D; JD 544H; KOMATSU WA250-5
C30951	<b>SOLD OUT</b>	SHOE, WEAR, 1.50" X 8" X 18"	104", 112", & 134" 3.0, 3.5, 4.0, 4.25, 4.5, 6.0, 6.25, 6.5, & 7.5 CU. YD. BUCKET FOR CASE 621D, 721D, 821C; JD544H; VOLVO L70-L90QC; JRB 416; KOMATSU 500-1, WA500-3; HYUNDAI HL760
C319540	<b>SOLD OUT</b>	EDGE, REVERSIBLE, CENTER, 1.25" X 10" X 54"	112" 4.0 & 4.5 CU. YD. BUCKET FOR CASE 621B, 621D; JD544H; KOMATSU WA250-5
C38353	<b>\$355.44</b>	EDGE, REVERSIBLE, END, 1.375" X 13" X 24"	100" & 106" 2.5 & 3.0 CU. YD. BUCKET FOR JRB 416; KOMATSU WA250; DRESSER 520C
C17883	<b>\$173.56</b>	EDGE, REVERSIBLE, END, 1" X 10" X 26"	102" 2.0, 2.25, 2.5, & 3.0 CU. YD. BUCKET FOR CASE 521D & 621B, JD
C17882	<b>SOLD OUT</b>	EDGE, REVERSIBLE, CENTER, 1" X 10" X 50"	102" 2.0, 2.25, 2.5, & 3.0 CU. YD. BUCKET FOR CASE 521D & 621B, JD
3003717	<b>\$266.69</b>	EDGE, REVERSIBLE, END, 1" X 8.25" X 16"	134" 6.5 CU. YD. BUCKET
52672	<b>\$106.65</b>	EDGE, REVERSIBLE, 0.625" X 8" X 62"	JD
19131211	<b>SOLD OUT</b>	EDGE, BOLT-ON, DOUBLE BEVEL FRONT, 0.625" X 8" X 90"	88" LOADER BUCKET
19131218	<b>SOLD OUT</b>	EDGE, BOLT-ON, DOUBLE BEVEL FRONT, 0.625" X 8" X 82"	80" LOADER BUCKET FOR JD210C, JD310G
19131210	<b>SOLD OUT</b>	EDGE, BOLT-ON, DOUBLE BEVEL FRONT, 0.625" X 8" X 92"	4-IN-1 BUCKET





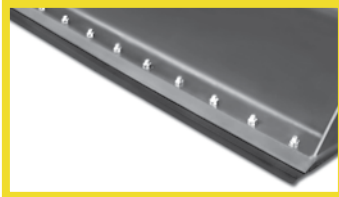
# Clearance Pricing Blowout!

## Cutting Edge Surplus

No other discounts apply. FOB Kronenwetter.

### CASE

Part #	Blow-Out Price	Description	Used In
19311604	\$232.50	EDGE, BOLT-ON, 0.75" X 8" X 82"	45.5" LOADER BUCKET FOR CASE 570, 45" FORD 340B
3000913	\$429.82	EDGE, REVERSIBLE, 1.125" X 9.75" X 6"	REVERSIBLE 60" CUTTING EDGE KIT
C340877	\$261.95	EDGE, REVERSIBLE END, 1" X 10" X 26"	102" 2.5 & 3.0 CU. YD. BUCKET FOR CASE 621D, TEREX TXL200, 5.0 CU. YD. JD544
19324101	\$391.35	EDGE, BOLT-ON, FRONT, 6 HOLE, 1" X 8" X 72"	4-IN-1 BUCKET
19326301	\$343.64	EDGE, CENTER, 1" X 10" X 76"	4-IN-1 BUCKET FOR CASE 521D
C324918	\$398.85	EDGE, REVERSIBLE, OUTER, 1.25" X 12" X 36"	109" 3.5 & 4.0 CU. YD. BUCKET FOR CASE 821
19362796	\$127.82	EDGE, BOLT-ON, DOUBLE BEVEL FRONT, 0.625" X 6" X 92"	96" 4-IN-1 BUCKET
19381984	\$67.90	EDGE, BOLT-ON, DOUBLE BEVEL FRONT, 0.625" X 6" X 82"	84" 4-IN-1 BUCKET
C33590	\$187.73	SHOE, SKID, 1.25" X 8" X 14"	103.7" 3.0 CU & 112" 4.5 CU. YD. BUCKET FOR CASE 621D, 102" 2.75 CU. YD. BUCKET FOR CASE CASE 621DXT
19131201	\$120.38	EDGE, BOLT-ON, DOUBLE BEVEL FRONT, 0.625" X 8" X 66"	LOADER BUCKET
C252700	<b>SOLD OUT</b>	SIDE CUTTER, T1156AHX, HENSLEY	BADGER EH125
C340876	\$462.39	EDGE, REVERSIBLE, CENTER, 1" X 10" X 54"	102" 2.5, 3.0, 3.25, & 5.0 CU. YD. BUCKET FOR JD544, CASE 621D, TEREX TXL200
19299303	\$177.64	EDGE, DOUBLE BEVEL FRONT, 0.75" X 8" X 84"	112" 4-IN-1 BUCKET FOR CASE 821E W/V29
19299201	\$193.95	EDGE, DOUBLE BEVEL FRONT, 0.75" X 8" X 76"	CASE
19381992	\$84.44	EDGE, BOLT-ON, DOUBLE BEVEL FRONT, 0.625" X 6" X 90"	92" 4-IN-1 BUCKET FOR JCB 212 W/Q-FIT, NEW HOLLAND W/BOE, FERMEC TLK
19299304	\$190.91	EDGE, DOUBLE BEVEL FRONT, 0.75" X 8" X 84"	112" 4-IN-1 BUCKET FOR CASE 821E W/V29
H922	\$109.71	EDGE, 0.63" X 8" X 72"	72" 4X2 SCRAPER
19131223	\$84.34	EDGE, BOLT-ON, DOUBLE BEVEL FRONT, 0.625" X 8" X 52"	51" 0.50 CU. YD. BUCKET FOR JD210LE; CASE 480, 580K; NH 545A, 545D
E16021	\$37.48	EDGE, DOUBLE BEVEL CORNER, 0.50" X 6" X 36"	36" BUCKET FOR LANDSCAPER
E13021	\$32.43	EDGE, DOUBLE BEVEL CORNER, 0.50" X 6" X 48"	48" BUCKET FOR LANDSCAPER





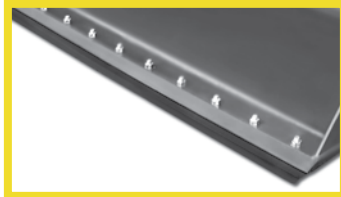
# Clearance Pricing Blowout!

## Cutting Edge Surplus

No other discounts apply. FOB Kronenwetter.

### CASE (continued)

Part #	Blow-Out Price	Description	Used In
19131212	\$150.28	EDGE, BOLT-ON, DOUBLE BEVEL FRONT, 0.625" X 8" X 84"	LOADER BUCKET
19381988	\$80.67	EDGE, BOLT-ON, DOUBLE BEVEL FRONT, 0.625" X 6" X 86"	88" 4-IN-1 BUCKET
19145601	\$272.50	EDGE, BOLT-ON, 0.75" X 8" X 94"	LOADER BUCKET
5A2305	\$290.20	EDGE, BOLT-ON, END, 1.5" X 12" X 26"	112.6" 6.50 HEAVY DUTY CU. YD. BUCKET
19381996	\$130.12	EDGE, BOLT-ON, DOUBLE BEVEL FRONT, 0.625" X 6" X 94"	96" 4-IN-1 BUCKET
192990	\$51.65	EDGE, DOUBLE BEVEL FRONT, 0.75" X 10" X 10"	CASE
19127403	\$184.25	EDGE, DOUBLE BEVEL FRONT, 0.75" X 8" X 90"	LOADER BUCKET
19326401	\$182.61	EDGE, DOUBLE BEVEL FRONT, 1" X 10" X 46"	4-IN-1 BUCKET
19131222	\$152.63	EDGE, BOLT-ON, DOUBLE BEVEL FRONT, 0.625" X 8" X 88"	86" LOADER BUCKET
19311603	<b>SOLD OUT</b>	EDGE, DOUBLE BEVEL FRONT, 0.625" X 8" X 86"	86" LOADER BUCKET
19131206	\$137.65	EDGE, BOLT-ON, DOUBLE BEVEL FRONT, 0.625" X 8" X 78"	LOADER BUCKET
19406678	\$131.04	EDGE, 0.625" X 8" X 78"	4-IN-1 BUCKET
19274503	\$41.54	EDGE, BOLT-ON, DOUBLE BEVEL FRONT, 0.625" X 6" X 56"	CUTTING EDGE KIT
C335262	\$213.25	EDGE, REVERSIBLE, 0.75" X 10" X 24"	CASE
19381986	<b>SOLD OUT</b>	EDGE, BOLT-ON, DOUBLE BEVEL FRONT, 0.625" X 6" X 84"	86" 4-IN-1 BUCKET 86"
19131220	\$108.51	EDGE, BOLT-ON, DOUBLE BEVEL FRONT, 0.625" X 8" X 92"	LOADER BUCKET
193684	<b>SOLD OUT</b>	EDGE, BOLT-ON, 0.75" X 8" X 96"	LOADER BUCKET
E17021	\$40.07	EDGE, DOUBLE BEVEL CORNER, 0.50" X 6" X 42"	42" LANDSCAPER
19362792	\$111.58	EDGE, BOLT-ON, DOUBLE BEVEL FRONT, 0.625" X 6" X 88"	4-IN-1 BUCKET FOR JD304J, TEREX/FERMEC 760, 860, 960, JCB
19131205	\$158.62	EDGE, BOLT-ON, DOUBLE BEVEL FRONT, 0.625" X 8" X 88"	4-IN-1 BUCKET
19131203	\$144.09	EDGE, BOLT-ON, DOUBLE BEVEL FRONT, 0.625" X 8" X 80"	4-IN-1 BUCKET
19310502	\$256.36	EDGE, DOUBLE BEVEL FRONT, 1" X 8" X 82"	4-IN-1 BUCKET
E18021	\$44.36	EDGE, DOUBLE BEVEL CORNER, 0.50" X 6" X 54"	54" SCRAPER
H808	\$92.56	EDGE, SCRAPER, 0.625" X 8" X 76"	SCRAPER
19362778	\$137.52	EDGE, DOUBLE BEVEL FRONT, 0.625" X 6" X 74"	78" 4-IN-1 BUCKET





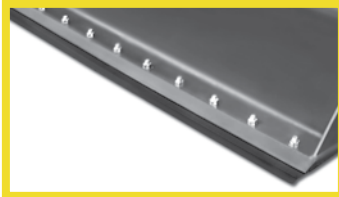
# Clearance Pricing Blowout!

## Cutting Edge Surplus

No other discounts apply. FOB Kronenwetter.

### CASE (continued)

Part #	Blow-Out Price	Description	Used In
E14021	\$41.05	EDGE, DOUBLE BEVEL CORNER, 0.50" X 6" X 60"	60" & 84" SCRAPER
E10021	\$75.47	EDGE, DOUBLE BEVEL CORNER, 0.50" X 6" X 84"	84" SCRAPER
19131204	\$150.89	EDGE, BOLT-ON, DOUBLE BEVEL FRONT, 0.625" X 8" X 84"	4-IN-1 BUCKET
H914	\$129.44	EDGE, SCRAPER, 0.625" X 8" X 84"	84" 4X2 SCRAPER FOR CASE 570MXT
C38352	\$822.12	EDGE, REVERSIBLE, CENTER, 1.375" X 13" X 60"	100" & 106" 2.5, 3.0, & 4.0 CU. YD. BUCKET
19362788	\$135.29	EDGE, BOLT-ON, DOUBLE BEVEL FRONT, 0.625" X 6" X 84"	88" 4-IN-1 BUCKET
19299403	\$146.62	EDGE, DOUBLE BEVEL FRONT, 0.75" X 8" X 74"	102" 4-IN-1 BUCKET FOR JD444J, JD544K, JD544J; CASE 621D; VOLVO L70
19406673	\$123.28	EDGE, 0.625" X 8" X 72"	4-IN-1 BUCKET
C10760	<b>SOLD OUT</b>	BIT, CORNER, 0.75" X 6" X 12.50"	100.4", 102", 105.9", 106.3" 2.5, 3.0, 3.25, 3.5 CU. YD. BUCKET FOR CASE 621, 721; JD624H; KOMATSU WA
E02021	\$59.14	EDGE, DOUBLE BEVEL CORNER, 0.50" X 6" X 72"	72" SCRAPER
H933	\$145.49	EDGE, DOUBLE BEVEL CORNER, 0.63" X 8" X 96"	SCRAPER
19131213	\$169.54	EDGE, BOLT-ON, 0.625" X 8" X 86"	72", 73", & 84" 1.0 CU. YD. LOADER BUCKET FOR JD210LE; CASE W11, 21D, 570; VOLVO L25B; TEREX TL80
52679	\$144.59	EDGE, REVERSIBLE, 0.625" X 8" X 86"	84" 1.6 CU. YD. BUCKET
19145602	\$206.19	EDGE, DRILLED, DOUBLE BEVEL, 0.75" X 8" X 96"	4-IN-1 BUCKET
19299404	<b>SOLD OUT</b>	EDGE, DOUBLE BEVEL FRONT, 0.75" X 8" X 74"	102" 4-IN-1 BUCKET FOR JD544J & JD544K, CASE 621D, 721E, VOLVO L70
C626737	<b>SOLD OUT</b>	EDGE, REVERSIBLE, 1.50" X 18" X 54"	54" BUCKET FOR CASE 621B
C28400	<b>SOLD OUT</b>	EDGE, REVERSIBLE, 1.25" X 10" X 86"	CASE
C309048	<b>SOLD OUT</b>	EDGE, REVERSIBLE, 1.25" X 10" X 74"	72" DITCH BUCKET
C39673	<b>SOLD OUT</b>	EDGE, REVERSIBLE, 1" X 10" X 96"	CASE





# Clearance Pricing Blowout!

## Cutting Edge Surplus

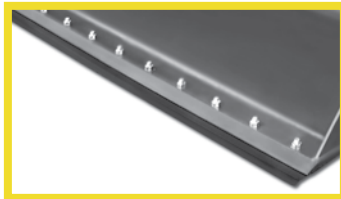
No other discounts apply. FOB Kronenwetter.

### CASE (continued)

Part #	Blow-Out Price	Description	Used In
C319541	<b>SOLD OUT</b>	EDGE, REVERSIBLE, END, 1.25" X 10" X 30"	112" 4.0 & 4.5 CU. YD. BUCKET FOR CASE 621B, 621D; JD 544H; KOMATSU WA250-5
C30951	<b>\$320.12</b>	SHOE, WEAR, 1.50" X 8" X 18"	104", 112", & 134" 3.0, 3.5, 4.0, 4.25, 4.5, 6.0, 6.25, 6.5, & 7.5 CU. YD. BUCKET FOR CASE 621D, 721D, 821C; JD544H; VOLVO L70-L90QC; JRB 416; KOMATSU 500-1, WA500-3; HYUNDAI HL760
C319540	<b>\$531.22</b>	EDGE, REVERSIBLE, CENTER, 1.25" X 10" X 54"	112" 4.0 & 4.5 CU. YD. BUCKET FOR CASE 621B, 621D; JD544H; KOMATSU WA250-5
C38353	<b>\$355.44</b>	EDGE, REVERSIBLE, END, 1.375" X 13" X 24"	100" & 106" 2.5 & 3.0 CU. YD. BUCKET
C17883	<b>\$173.56</b>	EDGE, REVERSIBLE, END, 1" X 10" X 26"	102" 2.0, 2.25, 2.5, & 3.0 CU. YD. BUCKET FOR CASE 521D & 621B
C17882	<b>SOLD OUT</b>	EDGE, REVERSIBLE, CENTER, 1" X 10" X 50"	102" 2.0, 2.25, 2.5, & 3.0 CU. YD. BUCKET FOR CASE 521D & 621B
3003717	<b>\$266.69</b>	EDGE, REVERSIBLE, END, 1" X 8.25" X 16"	134" 6.5 CU. YD. BUCKET
52672	<b>\$106.65</b>	EDGE, REVERSIBLE, 0.625" X 8" X 62"	CASE
19131211	<b>SOLD OUT</b>	EDGE, BOLT-ON, DOUBLE BEVEL FRONT, 0.625" X 8" X 90"	88" LOADER BUCKET
19131218	<b>SOLD OUT</b>	EDGE, BOLT-ON, DOUBLE BEVEL FRONT, 0.625" X 8" X 82"	80" LOADER BUCKET
19131210	<b>SOLD OUT</b>	EDGE, BOLT-ON, DOUBLE BEVEL FRONT, 0.625" X 8" X 92"	4-IN-1 BUCKET

### NEW HOLLAND

Part #	Blow-Out Price	Description	Used In
3000913	<b>\$429.82</b>	EDGE, REVERSIBLE, 1.125" X 9.75" X 6"	REVERSIBLE 60" CUTTING EDGE KIT
19362796	<b>\$127.82</b>	EDGE, BOLT-ON, DOUBLE BEVEL FRONT, 0.625" X 6" X 92"	96" 4-IN-1 BUCKET
C252700	<b>SOLD OUT</b>	SIDE CUTTER, T1156AHX, HENSLEY	NH
19299303	<b>\$177.64</b>	EDGE, DOUBLE BEVEL FRONT, 0.75" X 8" X 84"	112" 4-IN-1 BUCKET
19299304	<b>\$190.91</b>	EDGE, DOUBLE BEVEL FRONT, 0.75" X 8" X 84"	112" 4-IN-1 BUCKET
H922	<b>\$109.71</b>	EDGE, 0.63" X 8" X 72"	72" 4X2 SCRAPER
19131223	<b>\$84.34</b>	EDGE, BOLT-ON, DOUBLE BEVEL FRONT, 0.625" X 8" X 52"	51" 0.50 CU. YD. BUCKET





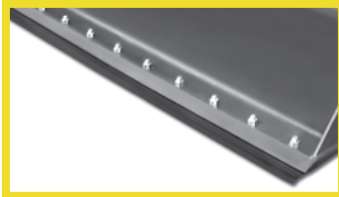
# Clearance Pricing Blowout!

## Cutting Edge Surplus

No other discounts apply. FOB Kronenwetter.

### NEW HOLLAND (continued)

Part #	Blow-Out Price	Description	Used In
E16021	\$37.48	EDGE, DOUBLE BEVEL CORNER, 0.50" X 6" X 36"	36" BUCKET FOR LANDSCAPER
19131212	\$150.28	EDGE, BOLT-ON, DOUBLE BEVEL FRONT, 0.625" X 8" X 84"	LOADER BUCKET
19381988	\$80.67	EDGE, BOLT-ON, DOUBLE BEVEL FRONT, 0.625" X 6" X 86"	88" 4-IN-1 BUCKET FOR NEW HOLLAND
5A2305	\$290.20	EDGE, BOLT-ON, END, 1.5" X 12" X 26"	112.6" 6.50 HEAVY DUTY CU. YD. BUCKET
19381996	\$130.12	EDGE, BOLT-ON, DOUBLE BEVEL FRONT, 0.625" X 6" X 94"	96" 4-IN-1 BUCKET FOR NEW HOLLAND
19311603	<b>SOLD OUT</b>	EDGE, DOUBLE BEVEL FRONT, 0.625" X 8" X 86"	86" LOADER BUCKET
19131206	\$137.65	EDGE, BOLT-ON, DOUBLE BEVEL FRONT, 0.625" X 8" X 78"	LOADER BUCKET
19381986	<b>SOLD OUT</b>	EDGE, BOLT-ON, DOUBLE BEVEL FRONT, 0.625" X 6" X 84"	86" 4-IN-1 BUCKET 86"
19131220	\$108.51	EDGE, BOLT-ON, DOUBLE BEVEL FRONT, 0.625" X 8" X 92"	LOADER BUCKET
193684	<b>SOLD OUT</b>	EDGE, BOLT-ON, 0.75" X 8" X 96"	LOADER BUCKET
19362792	\$111.58	EDGE, BOLT-ON, DOUBLE BEVEL FRONT, 0.625" X 6" X 88"	4-IN-1 BUCKET
19131205	\$158.62	EDGE, BOLT-ON, DOUBLE BEVEL FRONT, 0.625" X 8" X 88"	4-IN-1 BUCKET
19131203	\$144.09	EDGE, BOLT-ON, DOUBLE BEVEL FRONT, 0.625" X 8" X 80"	4-IN-1 BUCKET
19310502	\$256.36	EDGE, DOUBLE BEVEL FRONT, 1" X 8" X 82"	4-IN-1 BUCKET
E18021	\$44.36	EDGE, DOUBLE BEVEL CORNER, 0.50" X 6" X 54"	54" SCRAPER
H808	\$92.56	EDGE, SCRAPER, 0.625" X 8" X 76"	SCRAPER
19362778	\$137.52	EDGE, DOUBLE BEVEL FRONT, 0.625" X 6" X 74"	78" 4-IN-1 BUCKET
E14021	\$41.05	EDGE, DOUBLE BEVEL CORNER, 0.50" X 6" X 60"	60" & 84" SCRAPER
E10021	\$75.47	EDGE, DOUBLE BEVEL CORNER, 0.50" X 6" X 84"	84" SCRAPER
C10760	<b>SOLD OUT</b>	BIT, CORNER, 0.75" X 6" X 12.50"	100.4", 102", 105.9", 106.3" 2.5, 3.0, 3.25, 3.5 CU. YD. BUCKET
E02021	\$59.14	EDGE, DOUBLE BEVEL CORNER, 0.50" X 6" X 72"	72" SCRAPER
H933	\$145.49	EDGE, DOUBLE BEVEL CORNER, 0.63" X 8" X 96"	SCRAPER
52679	\$144.59	EDGE, REVERSIBLE, 0.625" X 8" X 86"	84" 1.6 CU. YD. BUCKET
19145602	\$206.19	EDGE, DRILLED, DOUBLE BEVEL, 0.75" X 8" X 96"	4-IN-1 BUCKET





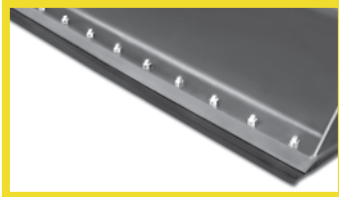
# Clearance Pricing Blowout!

## Cutting Edge Surplus

No other discounts apply. FOB Kronenwetter.

### NEW HOLLAND (continued)

Part #	Blow-Out Price	Description	Used In
19299404	<b>SOLD OUT</b>	EDGE, DOUBLE BEVEL FRONT, 0.75" X 8" X 74"	102" 4-IN-1 BUCKET
C626737	<b>SOLD OUT</b>	EDGE, REVERSIBLE, 1.50" X 18" X 54"	54" BUCKET
C319541	<b>SOLD OUT</b>	EDGE, REVERSIBLE, END, 1.25" X 10" X 30"	112" 4.0 & 4.5 CU. YD. BUCKET
C30951	<b>SOLD OUT</b>	SHOE, WEAR, 1.50" X 8" X 18"	104", 112", & 134" 3.0, 3.5, 4.0, 4.25, 4.5, 6.0, 6.25, 6.5, & 7.5 CU. YD. BUCKET
C319540	<b>SOLD OUT</b>	EDGE, REVERSIBLE, CENTER, 1.25" X 10" X 54"	112" 4.0 & 4.5 CU. YD. BUCKET
C38353	<b>\$355.44</b>	EDGE, REVERSIBLE, END, 1.375" X 13" X 24"	100" & 106" 2.5 & 3.0 CU. YD. BUCKET
C17883	<b>\$173.56</b>	EDGE, REVERSIBLE, END, 1" X 10" X 26"	102" 2.0, 2.25, 2.5, & 3.0 CU. YD. BUCKET
C17882	<b>SOLD OUT</b>	EDGE, REVERSIBLE, CENTER, 1" X 10" X 50"	102" 2.0, 2.25, 2.5, & 3.0 CU. YD. BUCKET
19311604	<b>\$232.50</b>	EDGE, BOLT-ON, 0.75" X 8" X 82"	45.5" LOADER BUCKET FOR CASE 570, 45" FORD 340B
3000913	<b>\$429.82</b>	EDGE, REVERSIBLE, 1.125" X 9.75" X 6"	REVERSIBLE 60" CUTTING EDGE KIT
19326301	<b>\$343.64</b>	EDGE, CENTER, 1" X 10" X 76"	4-IN-1 BUCKET STET
19362796	<b>\$127.82</b>	EDGE, BOLT-ON, DOUBLE BEVEL FRONT, 0.625" X 6" X 92"	96" 4-IN-1 BUCKET
19381984	<b>\$67.90</b>	EDGE, BOLT-ON, DOUBLE BEVEL FRONT, 0.625" X 6" X 82"	84" 4-IN-1 BUCKET
19131201	<b>\$120.38</b>	EDGE, BOLT-ON, DOUBLE BEVEL FRONT, 0.625" X 8" X 66"	LOADER BUCKET
C252700	<b>SOLD OUT</b>	SIDE CUTTER, T1156AHX, HENSLEY	BADGER EH125
19299303	<b>\$177.64</b>	EDGE, DOUBLE BEVEL FRONT, 0.75" X 8" X 84"	112" 4-IN-1 BUCKET STET
19381992	<b>\$84.44</b>	EDGE, BOLT-ON, DOUBLE BEVEL FRONT, 0.625" X 6" X 90"	92" 4-IN-1 BUCKET FOR JCB 212 W/Q-FIT, NEW HOLLAND W/BOE, FERMEC TLK
19299304	<b>\$190.91</b>	EDGE, DOUBLE BEVEL FRONT, 0.75" X 8" X 84"	112" 4-IN-1 BUCKET
H922	<b>\$109.71</b>	EDGE, 0.63" X 8" X 72"	72" 4X2 SCRAPER
19131223	<b>\$84.34</b>	EDGE, BOLT-ON, DOUBLE BEVEL FRONT, 0.625" X 8" X 52"	51" 0.50 CU. YD. BUCKET FOR JD210LE; CASE 480, 580K; NH 545A, 545D





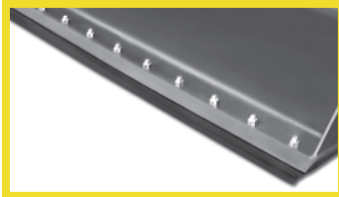
# Clearance Pricing Blowout!

## Cutting Edge Surplus

No other discounts apply. FOB Kronenwetter.

### NEW HOLLAND (continued)

Part #	Blow-Out Price	Description	Used In
E16021	\$37.48	EDGE, DOUBLE BEVEL CORNER, 0.50" X 6" X 36"	36" BUCKET FOR LANDSCAPER
E13021	\$32.43	EDGE, DOUBLE BEVEL CORNER, 0.50" X 6" X 48"	48" BUCKET FOR LANDSCAPER
19131212	\$150.28	EDGE, BOLT-ON, DOUBLE BEVEL FRONT, 0.625" X 8" X 84"	LOADER BUCKET
19381988	\$80.67	EDGE, BOLT-ON, DOUBLE BEVEL FRONT, 0.625" X 6" X 86"	88" 4-IN-1 BUCKET FOR NEW HOLLAND
5A2305	\$290.20	EDGE, BOLT-ON, END, 1.5" X 12" X 26"	112.6" 6.50 HEAVY DUTY CU. YD. BUCKET FOR KAWASAKI 95Z4
19381996	\$130.12	EDGE, BOLT-ON, DOUBLE BEVEL FRONT, 0.625" X 6" X 94"	96" 4-IN-1 BUCKET FOR NEW HOLLAND
192990	\$51.65	EDGE, DOUBLE BEVEL FRONT, 0.75" X 10" X 10"	NH
19127403	\$184.25	EDGE, DOUBLE BEVEL FRONT, 0.75" X 8" X 90"	LOADER BUCKET
19326401	\$182.61	EDGE, DOUBLE BEVEL FRONT, 1" X 10" X 46"	4-IN-1 BUCKET
19311603	<b>SOLD OUT</b>	EDGE, DOUBLE BEVEL FRONT, 0.625" X 8" X 86"	86" LOADER BUCKET
19131206	\$137.65	EDGE, BOLT-ON, DOUBLE BEVEL FRONT, 0.625" X 8" X 78"	LOADER BUCKET
19406678	\$131.04	EDGE, 0.625" X 8" X 78"	4-IN-1 BUCKET
19274503	\$41.54	EDGE, BOLT-ON, DOUBLE BEVEL FRONT, 0.625" X 6" X 56"	CUTTING EDGE KIT
C335262	\$213.25	EDGE, REVERSIBLE, 0.75" X 10" X 24"	NH
19381986	<b>SOLD OUT</b>	EDGE, BOLT-ON, DOUBLE BEVEL FRONT, 0.625" X 6" X 84"	86" 4-IN-1 BUCKET 86"
19131220	\$108.51	EDGE, BOLT-ON, DOUBLE BEVEL FRONT, 0.625" X 8" X 92"	LOADER BUCKET
193684	<b>SOLD OUT</b>	EDGE, BOLT-ON, 0.75" X 8" X 96"	LOADER BUCKET
E17021	\$40.07	EDGE, DOUBLE BEVEL CORNER, 0.50" X 6" X 42"	42" LANDSCAPER
19362792	\$111.58	EDGE, BOLT-ON, DOUBLE BEVEL FRONT, 0.625" X 6" X 88"	4-IN-1 BUCKET
19131205	\$158.62	EDGE, BOLT-ON, DOUBLE BEVEL FRONT, 0.625" X 8" X 88"	4-IN-1 BUCKET
19131203	\$144.09	EDGE, BOLT-ON, DOUBLE BEVEL FRONT, 0.625" X 8" X 80"	4-IN-1 BUCKET
19310502	\$256.36	EDGE, DOUBLE BEVEL FRONT, 1" X 8" X 82"	4-IN-1 BUCKET
E18021	\$44.36	EDGE, DOUBLE BEVEL CORNER, 0.50" X 6" X 54"	54" SCRAPER





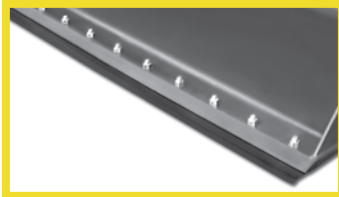
# Clearance Pricing Blowout!

## Cutting Edge Surplus

No other discounts apply. FOB Kronenwetter.

### NEW HOLLAND (continued)

Part #	Blow-Out Price	Description	Used In
H808	\$92.56	EDGE, SCRAPER, 0.625" X 8" X 76"	SCRAPER
19362778	\$137.52	EDGE, DOUBLE BEVEL FRONT, 0.625" X 6" X 74"	78" 4-IN-1 BUCKET FOR TAKEUCHI TW60
E14021	\$41.05	EDGE, DOUBLE BEVEL CORNER, 0.50" X 6" X 60"	60" & 84" SCRAPER
E10021	\$75.47	EDGE, DOUBLE BEVEL CORNER, 0.50" X 6" X 84"	84" SCRAPER
19131204	\$150.89	EDGE, BOLT-ON, DOUBLE BEVEL FRONT, 0.625" X 8" X 84"	4-IN-1 BUCKET
H914	\$129.44	EDGE, SCRAPER, 0.625" X 8" X 84"	84" 4X2 SCRAPER
E02021	\$59.14	EDGE, DOUBLE BEVEL CORNER, 0.50" X 6" X 72"	72" SCRAPER
H933	\$145.49	EDGE, DOUBLE BEVEL CORNER, 0.63" X 8" X 96"	SCRAPER
52679	\$144.59	EDGE, REVERSIBLE, 0.625" X 8" X 86"	84" 1.6 CU. YD. BUCKET
19145602	\$206.19	EDGE, DRILLED, DOUBLE BEVEL, 0.75" X 8" X 96"	4-IN-1 BUCKET
19299404	<b>SOLD OUT</b>	EDGE, DOUBLE BEVEL FRONT, 0.75" X 8" X 74"	102" 4-IN-1 BUCKET
C626737	<b>SOLD OUT</b>	EDGE, REVERSIBLE, 1.50" X 18" X 54"	54" BUCKET
C28400	<b>SOLD OUT</b>	EDGE, REVERSIBLE, 1.25" X 10" X 86"	NH
C309048	<b>SOLD OUT</b>	EDGE, REVERSIBLE, 1.25" X 10" X 74"	72" DITCH BUCKET
X02811	\$121.10	EDGE, DOUBLE BEVEL CORNER, 0.50" X 6" X 88"	NH
C319541	<b>SOLD OUT</b>	EDGE, REVERSIBLE, END, 1.25" X 10" X 30"	112" 4.0 & 4.5 CU. YD. BUCKET
C30951	<b>SOLD OUT</b>	SHOE, WEAR, 1.50" X 8" X 18"	104", 112", & 134" 3.0, 3.5, 4.0, 4.25, 4.5, 6.0, 6.25, 6.5, & 7.5 CU. YD. BUCKET
C319540	<b>SOLD OUT</b>	EDGE, REVERSIBLE, CENTER, 1.25" X 10" X 54"	112" 4.0 & 4.5 CU. YD. BUCKET
C38353	\$355.44	EDGE, REVERSIBLE, END, 1.375" X 13" X 24"	100" & 106" 2.5 & 3.0 CU. YD. BUCKET
C17883	\$173.56	EDGE, REVERSIBLE, END, 1" X 10" X 26"	102" 2.0, 2.25, 2.5, & 3.0 CU. YD. BUCKET
C17882	<b>SOLD OUT</b>	EDGE, REVERSIBLE, CENTER, 1" X 10" X 50"	102" 2.0, 2.25, 2.5, & 3.0 CU. YD. BUCKET
3003717	\$266.69	EDGE, REVERSIBLE, END, 1" X 8.25" X 16"	134" 6.5 CU. YD. BUCKET





# Clearance Pricing Blowout!

## Cutting Edge Surplus

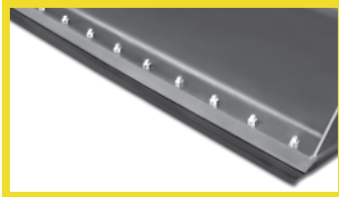
No other discounts apply. FOB Kronenwetter.

### NEW HOLLAND (continued)

Part #	Blow-Out Price	Description	Used In
52672	\$106.65	EDGE, REVERSIBLE, 0.625" X 8" X 62"	NH
19131211	SOLD OUT	EDGE, BOLT-ON, DOUBLE BEVEL FRONT, 0.625" X 8" X 90"	88" LOADER BUCKET
19131218	SOLD OUT	EDGE, BOLT-ON, DOUBLE BEVEL FRONT, 0.625" X 8" X 82"	80" LOADER BUCKET
19131210	SOLD OUT	EDGE, BOLT-ON, DOUBLE BEVEL FRONT, 0.625" X 8" X 92"	4-IN-1 BUCKET

### TEREX

Part #	Blow-Out Price	Description	Used In
C251613	\$471.24	SIDE CUTTER, T1156A, ESCO	ESCO 6" 'M' STYLE SIDE CUTTER KIT
3000913	\$429.82	EDGE, REVERSIBLE, 1.125" X 9.75" X 6"	REVERSIBLE 60" CUTTING EDGE KIT
C251615	\$471.24	SIDE CUTTER, T1157A, ESCO	ESCO 6" 'M' STYLE SIDE CUTTER KIT
C340877	\$261.95	EDGE, REVERSIBLE END, 1" X 10" X 26"	102" 2.5 & 3.0 CU. YD. BUCKET FOR CASE 621D, TEREX TXL200, 5.0 CU. YD. JD544
19324101	\$391.35	EDGE, BOLT-ON, FRONT, 6 HOLE, 1" X 8" X 72"	4-IN-1 BUCKET
19326301	\$343.64	EDGE, CENTER, 1" X 10" X 76"	4-IN-1 BUCKET
19362796	\$127.82	EDGE, BOLT-ON, DOUBLE BEVEL FRONT, 0.625" X 6" X 92"	96" 4-IN-1 BUCKET
19381984	\$67.90	EDGE, BOLT-ON, DOUBLE BEVEL FRONT, 0.625" X 6" X 82"	84" 4-IN-1 BUCKET
19131201	\$120.38	EDGE, BOLT-ON, DOUBLE BEVEL FRONT, 0.625" X 8" X 66"	LOADER BUCKET
C252700	SOLD OUT	SIDE CUTTER, T1156AHX, HENSLEY	TEREX
C340876	\$462.39	EDGE, REVERSIBLE, CENTER, 1" X 10" X 54"	102" 2.5, 3.0, 3.25, & 5.0 CU. YD. BUCKET FOR JD544, CASE 621D, TEREX TXL200
3010966	SOLD OUT	EDGE, REVERSIBLE, OUTER, 1.50" X 14" X 20"	134" 6.5 & 7.0 CU. YD. BUCKET FOR TEREX TXL500-2
19299201	\$193.95	EDGE, DOUBLE BEVEL FRONT, 0.75" X 8" X 76"	
19381992	\$84.44	EDGE, BOLT-ON, DOUBLE BEVEL FRONT, 0.625" X 6" X 90"	92" 4-IN-1 BUCKET
19299304	\$190.91	EDGE, DOUBLE BEVEL FRONT, 0.75" X 8" X 84"	112" 4-IN-1 BUCKET
19131223	\$84.34	EDGE, BOLT-ON, DOUBLE BEVEL FRONT, 0.625" X 8" X 52"	51" 0.50 CU. YD. BUCKET
19131212	\$150.28	EDGE, BOLT-ON, DOUBLE BEVEL FRONT, 0.625" X 8" X 84"	LOADER BUCKET





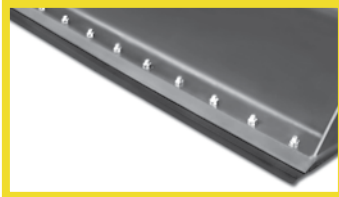
# Clearance Pricing Blowout!

## Cutting Edge Surplus

No other discounts apply. FOB Kronenwetter.

### TEREX (continued)

Part #	Blow-Out Price	Description	Used In
5A2305	\$290.20	EDGE, BOLT-ON, END, 1.5" X 12" X 26"	112.6" 6.50 HEAVY DUTY CU. YD. BUCKET
19381996	\$130.12	EDGE, BOLT-ON, DOUBLE BEVEL FRONT, 0.625" X 6" X 94"	96" 4-IN-1 BUCKET
19131206	\$137.65	EDGE, BOLT-ON, DOUBLE BEVEL FRONT, 0.625" X 8" X 78"	LOADER BUCKET
19406678	\$131.04	EDGE, 0.625" X 8" X 78"	4-IN-1 BUCKET
19274503	\$41.54	EDGE, BOLT-ON, DOUBLE BEVEL FRONT, 0.625" X 6" X 56"	CUTTING EDGE KIT
C335262	\$213.25	EDGE, REVERSIBLE, 0.75" X 10" X 24"	TEREX
19381986	SOLD OUT	EDGE, BOLT-ON, DOUBLE BEVEL FRONT, 0.625" X 6" X 84"	86" 4-IN-1 BUCKET 86"
19131220	\$108.51	EDGE, BOLT-ON, DOUBLE BEVEL FRONT, 0.625" X 8" X 92"	LOADER BUCKET
193684	SOLD OUT	EDGE, BOLT-ON, 0.75" X 8" X 96"	LOADER BUCKET
19131204	\$150.89	EDGE, BOLT-ON, DOUBLE BEVEL FRONT, 0.625" X 8" X 84"	4-IN-1 BUCKET
C38352	\$822.12	EDGE, REVERSIBLE, CENTER, 1.375" X 13" X 60"	100" & 106" 2.5, 3.0, & 4.0 CU. YD. BUCKET
C252701	\$439.39	SIDE CUTTER, T1157AHX, HENSLEY	6" HENSLEY "M" SIDE CUTTER
52679	\$144.59	EDGE, REVERSIBLE, 0.625" X 8" X 86"	84" 1.6 CU. YD. BUCKET FOR TEREX SKL845 & KOMATSU
19145602	\$206.19	EDGE, DRILLED, DOUBLE BEVEL, 0.75" X 8" X 96"	4-IN-1 BUCKET
19299404	SOLD OUT	EDGE, DOUBLE BEVEL FRONT, 0.75" X 8" X 74"	102" 4-IN-1 BUCKET
C626737	SOLD OUT	EDGE, REVERSIBLE, 1.50" X 18" X 54"	54" BUCKET FOR CASE 621B
C28400	SOLD OUT	EDGE, REVERSIBLE, 1.25" X 10" X 86"	TEREX
C309048	SOLD OUT	EDGE, REVERSIBLE, 1.25" X 10" X 74"	72" DITCH BUCKET
C319541	SOLD OUT	EDGE, REVERSIBLE, END, 1.25" X 10" X 30"	112" 4.0 & 4.5 CU. YD. BUCKET





# Clearance Pricing Blowout!

## Cutting Edge Surplus

No other discounts apply. FOB Kronenwetter.

### TEREX (continued)

Part #	Blow-Out Price	Description	Used In
C30951	<b>SOLD OUT</b>	SHOE, WEAR, 1.50" X 8" X 18"	104", 112", & 134" 3.0, 3.5, 4.0, 4.25, 4.5, 6.0, 6.25, 6.5, & 7.5 CU. YD. BUCKET
C319540	<b>SOLD OUT</b>	EDGE, REVERSIBLE, CENTER, 1.25" X 10" X 54"	112" 4.0 & 4.5 CU. YD. BUCKET
C38353	<b>\$355.44</b>	EDGE, REVERSIBLE, END, 1.375" X 13" X 24"	100" & 106" 2.5 & 3.0 CU. YD. BUCKET
C17883	<b>\$173.56</b>	EDGE, REVERSIBLE, END, 1" X 10" X 26"	102" 2.0, 2.25, 2.5, & 3.0 CU. YD. BUCKET
C17882	<b>SOLD OUT</b>	EDGE, REVERSIBLE, CENTER, 1" X 10" X 50"	102" 2.0, 2.25, 2.5, & 3.0 CU. YD. BUCKET
3003717	<b>\$266.69</b>	EDGE, REVERSIBLE, END, 1" X 8.25" X 16"	134" 6.5 CU. YD. BUCKET
52672	<b>\$106.65</b>	EDGE, REVERSIBLE, 0.625" X 8" X 62"	TEREX
19131211	<b>SOLD OUT</b>	EDGE, BOLT-ON, DOUBLE BEVEL FRONT, 0.625" X 8" X 90"	88" LOADER BUCKET
19131218	<b>SOLD OUT</b>	EDGE, BOLT-ON, DOUBLE BEVEL FRONT, 0.625" X 8" X 82"	80" LOADER BUCKET

### VOLVO

Part #	Blow-Out Price	Description	Used In
C251613	<b>\$471.24</b>	SIDE CUTTER, T1156A, ESCO	ESCO 6" 'M' STYLE SIDE CUTTER KIT
3000913	<b>\$429.82</b>	EDGE, REVERSIBLE, 1.125" X 9.75" X 6"	REVERSIBLE 60" CUTTING EDGE KIT
C251615	<b>\$471.24</b>	SIDE CUTTER, T1157A, ESCO	ESCO 6" 'M' STYLE SIDE CUTTER KIT
C252700	<b>SOLD OUT</b>	SIDE CUTTER, T1156AHX, HENSLEY	VOLVO
19362788	<b>\$135.29</b>	EDGE, BOLT-ON, DOUBLE BEVEL FRONT, 0.625" X 6" X 84"	88" 4-IN-1 BUCKET
19299403	<b>\$146.62</b>	EDGE, DOUBLE BEVEL FRONT, 0.75" X 8" X 74"	102" 4-IN-1 BUCKET FOR JD444J, JD544K, JD544J; CASE 621D; VOLVO L70



# Clearance Pricing Blowout!

## Cutting Edge Surplus

No other discounts apply. FOB Kronenwetter.

### VOLVO (continued)

Part #	Blow-Out Price	Description	Used In
C10760	<b>SOLD OUT</b>	BIT, CORNER, 0.75" X 6" X 12.50"	100.4", 102", 105.9", 106.3" 2.5, 3.0, 3.25, 3.5 CU. YD. BUCKET
C319541	<b>SOLD OUT</b>	EDGE, REVERSIBLE, END, 1.25" X 10" X 30"	112" 4.0 & 4.5 CU. YD. BUCKET
C30951	<b>SOLD OUT</b>	SHOE, WEAR, 1.50" X 8" X 18"	104", 112", & 134" 3.0, 3.5, 4.0, 4.25, 4.5, 6.0, 6.25, 6.5, & 7.5 CU. YD. BUCKET FOR CASE 621D, 721D, 821C; JD544H; VOLVO L70-L90QC; JRB 416; KOMATSU 500-1, WA500-3; HYUNDAI HL760
C319540	<b>SOLD OUT</b>	EDGE, REVERSIBLE, CENTER, 1.25" X 10" X 54"	112" 4.0 & 4.5 CU. YD. BUCKET
C38353	<b>\$355.44</b>	EDGE, REVERSIBLE, END, 1.375" X 13" X 24"	100" & 106" 2.5 & 3.0 CU. YD. BUCKET
C17883	<b>\$173.56</b>	EDGE, REVERSIBLE, END, 1" X 10" X 26"	102" 2.0, 2.25, 2.5, & 3.0 CU. YD. BUCKET FOR CASE 521D & 621B
C17882	<b>SOLD OUT</b>	EDGE, REVERSIBLE, CENTER, 1" X 10" X 50"	102" 2.0, 2.25, 2.5, & 3.0 CU. YD. BUCKET FOR CASE 521D & 621B
3003717	<b>\$266.69</b>	EDGE, REVERSIBLE, END, 1" X 8.25" X 16"	134" 6.5 CU. YD. BUCKET

### HYUNDAI

Part #	Blow-Out Price	Description	Used In
C251613	<b>\$471.24</b>	SIDE CUTTER, T1156A, ESCO	ESCO 6" 'M' STYLE SIDE CUTTER KIT
3000913	<b>\$429.82</b>	EDGE, REVERSIBLE, 1.125" X 9.75" X 6"	REVERSIBLE 60" CUTTING EDGE KIT
C251615	<b>\$471.24</b>	SIDE CUTTER, T1157A, ESCO	ESCO 6" 'M' STYLE SIDE CUTTER KIT
C39836	<b>\$366.19</b>	EDGE, REVERSIBLE END, 1U0761, CAT	134.05" 5.75, 6.0, 7.0, & 7.5 CU. YD. BUCKET
C252700	<b>SOLD OUT</b>	SIDE CUTTER, T1156AHX, HENSLEY	HYUNDAI

### JCB

Part #	Blow-Out Price	Description	Used In
D23239754	<b>\$160.83</b>	EDGE, 0.75" X 8" X 56"	54" DG BUCKET FOR CAT 420D/E, PO BACKHOE, JCB 217/3CX, JD410G, BOBCAT 442
3000913	<b>\$429.82</b>	EDGE, REVERSIBLE, 1.125" X 9.75" X 6"	REVERSIBLE 60" CUTTING EDGE KIT
19324101	<b>\$391.35</b>	EDGE, BOLT-ON, FRONT, 6 HOLE, 1" X 8" X 72"	4-IN-1 BUCKET
19326301	<b>\$343.64</b>	EDGE, CENTER, 1" X 10" X 76"	4-IN-1 BUCKET
19381984	<b>\$67.90</b>	EDGE, BOLT-ON, DOUBLE BEVEL FRONT, 0.625" X 6" X 82"	84" 4-IN-1 BUCKET



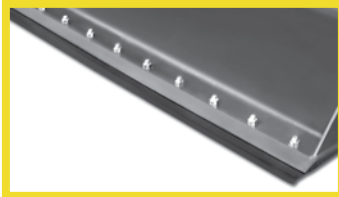
# Clearance Pricing Blowout!

## Cutting Edge Surplus

No other discounts apply. FOB Kronenwetter.

### JCB (continued)

Part #	Blow-Out Price	Description	Used In
C252700	<b>SOLD OUT</b>	SIDE CUTTER, T1156AHX, HENSLEY	JCB
19299304	<b>\$190.91</b>	EDGE, DOUBLE BEVEL FRONT, 0.75" X 8" X 84"	112" 4-IN-1 BUCKET
H922	<b>\$109.71</b>	EDGE, 0.63" X 8" X 72"	72" 4X2 SCRAPER
19131223	<b>\$84.34</b>	EDGE, BOLT-ON, DOUBLE BEVEL FRONT, 0.625" X 8" X 52"	51" 0.50 CU. YD. BUCKET
19381988	<b>\$80.67</b>	EDGE, BOLT-ON, DOUBLE BEVEL FRONT, 0.625" X 6" X 86"	88" 4-IN-1 BUCKET
5A2305	<b>\$290.20</b>	EDGE, BOLT-ON, END, 1.5" X 12" X 26"	112.6" 6.50 HEAVY DUTY CU. YD. BUCKET
19381996	<b>\$130.12</b>	EDGE, BOLT-ON, DOUBLE BEVEL FRONT, 0.625" X 6" X 94"	96" 4-IN-1 BUCKET FOR NEW HOLLAND
19311603	<b>SOLD OUT</b>	EDGE, DOUBLE BEVEL FRONT, 0.625" X 8" X 86"	86" LOADER BUCKET
19274503	<b>\$41.54</b>	EDGE, BOLT-ON, DOUBLE BEVEL FRONT, 0.625" X 6" X 56"	CUTTING EDGE KIT
19131204	<b>\$150.89</b>	EDGE, BOLT-ON, DOUBLE BEVEL FRONT, 0.625" X 8" X 84"	4-IN-1 BUCKET
E02021	<b>\$59.14</b>	EDGE, DOUBLE BEVEL CORNER, 0.50" X 6" X 72"	72" SCRAPER
H933	<b>\$145.49</b>	EDGE, DOUBLE BEVEL CORNER, 0.63" X 8" X 96"	SCRAPER
52679	<b>\$144.59</b>	EDGE, REVERSIBLE, 0.625" X 8" X 86"	84" 1.6 CU. YD. BUCKET
19145602	<b>\$206.19</b>	EDGE, DRILLED, DOUBLE BEVEL, 0.75" X 8" X 96"	4-IN-1 BUCKET
19299404	<b>SOLD OUT</b>	EDGE, DOUBLE BEVEL FRONT, 0.75" X 8" X 74"	102" 4-IN-1 BUCKET
C319541	<b>SOLD OUT</b>	EDGE, REVERSIBLE, END, 1.25" X 10" X 30"	112" 4.0 & 4.5 CU. YD. BUCKET FOR CASE 621B, 621D; JD 544H; KOMATSU WA250-5
C30951	<b>SOLD OUT</b>	SHOE, WEAR, 1.50" X 8" X 18"	104", 112", & 134" 3.0, 3.5, 4.0, 4.25, 4.5, 6.0, 6.25, 6.5, & 7.5 CU. YD. BUCKET
C319540	<b>SOLD OUT</b>	EDGE, REVERSIBLE, CENTER, 1.25" X 10" X 54"	112" 4.0 & 4.5 CU. YD. BUCKET
C38353	<b>\$355.44</b>	EDGE, REVERSIBLE, END, 1.375" X 13" X 24"	100" & 106" 2.5 & 3.0 CU. YD. BUCKET





# Clearance Pricing Blowout!

## Cutting Edge Surplus

No other discounts apply. FOB Kronenwetter.

### JCB (continued)

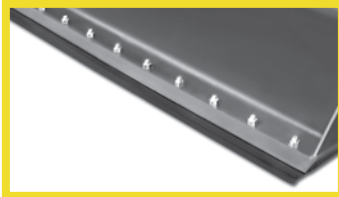
Part #	Blow-Out Price	Description	Used In
C17883	\$173.56	EDGE, REVERSIBLE, END, 1" X 10" X 26"	102" 2.0, 2.25, 2.5, & 3.0 CU. YD. BUCKET
C17882	SOLD OUT	EDGE, REVERSIBLE, CENTER, 1" X 10" X 50"	102" 2.0, 2.25, 2.5, & 3.0 CU. YD. BUCKET
3003717	\$266.69	EDGE, REVERSIBLE, END, 1" X 8.25" X 16"	134" 6.5 CU. YD. BUCKET
19131211	SOLD OUT	EDGE, BOLT-ON, DOUBLE BEVEL FRONT, 0.625" X 8" X 90"	88" LOADER BUCKET

### LINK BELT

Part #	Blow-Out Price	Description	Used In
C251613	\$471.24	SIDE CUTTER, T1156A, ESCO	ESCO 6" 'M' STYLE SIDE CUTTER KIT
3000913	\$429.82	EDGE, REVERSIBLE, 1.125" X 9.75" X 6"	REVERSIBLE 60" CUTTING EDGE KIT
C251615	\$471.24	SIDE CUTTER, T1157A, ESCO	ESCO 6" 'M' STYLE SIDE CUTTER KIT
C252700	SOLD OUT	SIDE CUTTER, T1156AHX, HENSLEY	LINKBELT
C252701	\$439.39	SIDE CUTTER, T1157AHX, HENSLEY	6" HENSLEY "M" SIDE CUTTER

### DRESSER

Part #	Blow-Out Price	Description	Used In
3000913	\$429.82	EDGE, REVERSIBLE, 1.125" X 9.75" X 6"	REVERSIBLE 60" CUTTING EDGE KIT
C252700	SOLD OUT	SIDE CUTTER, T1156AHX, HENSLEY	DRESSER
C319541	SOLD OUT	EDGE, REVERSIBLE, END, 1.25" X 10" X 30"	112" 4.0 & 4.5 CU. YD. BUCKET
C30951	SOLD OUT	SHOE, WEAR, 1.50" X 8" X 18"	104", 112", & 134" 3.0, 3.5, 4.0, 4.25, 4.5, 6.0, 6.25, 6.5, & 7.5 CU. YD. BUCKET
C319540	SOLD OUT	EDGE, REVERSIBLE, CENTER, 1.25" X 10" X 54"	112" 4.0 & 4.5 CU. YD. BUCKET
C38353	\$355.44	EDGE, REVERSIBLE, END, 1.375" X 13" X 24"	100" & 106" 2.5 & 3.0 CU. YD. BUCKET FOR JRB 416; KOMATSU WA250; DRESSER 520C
C17883	\$173.56	EDGE, REVERSIBLE, END, 1" X 10" X 26"	102" 2.0, 2.25, 2.5, & 3.0 CU. YD. BUCKET
C17882	SOLD OUT	EDGE, REVERSIBLE, CENTER, 1" X 10" X 50"	102" 2.0, 2.25, 2.5, & 3.0 CU. YD. BUCKET
3003717	\$266.69	EDGE, REVERSIBLE, END, 1" X 8.25" X 16"	134" 6.5 CU. YD. BUCKET





# Clearance Pricing Blowout!

## Cutting Edge Surplus

No other discounts apply. FOB Kronenwetter.

### Kawasaki

Part #	Blow-Out Price	Description	Used In
3000913	\$429.82	EDGE, REVERSIBLE, 1.125" X 9.75" X 6"	REVERSIBLE 60" CUTTING EDGE KIT
19131201	\$120.38	EDGE, BOLT-ON, DOUBLE BEVEL FRONT, 0.625" X 8" X 66"	LOADER BUCKET
C252700	SOLD OUT	SIDE CUTTER, T1156AHX, HENSLEY	BADGER EH125

### BOBCAT

Part #	Blow-Out Price	Description	Used In
D23239754	\$160.83	EDGE, 0.75" X 8" X 56"	54" DG BUCKET
3000913	\$429.82	EDGE, REVERSIBLE, 1.125" X 9.75" X 6"	REVERSIBLE 60" CUTTING EDGE KIT

### JRB

Part #	Blow-Out Price	Description	Used In
3000913	\$429.82	EDGE, REVERSIBLE, 1.125" X 9.75" X 6"	REVERSIBLE 60" CUTTING EDGE KIT
3014768	\$318.89	EDGE, REVERSIBLE, 87306795, CASE	119.3" 4.0, 4.5, & 7.0 CU. YD. BUCKET FOR JRB418
3014769	\$527.32	EDGE, REVERSIBLE, 87306796, CASE	119.3" 4.0, 4.5, & 7.0 CU. YD. BUCKET FOR JRB418
19381984	\$67.90	EDGE, BOLT-ON, DOUBLE BEVEL FRONT, 0.625" X 6" X 82"	84" 4-IN-1 BUCKET
C252700	SOLD OUT	SIDE CUTTER, T1156AHX, HENSLEY	BADGER EH125
19381992	\$84.44	EDGE, BOLT-ON, DOUBLE BEVEL FRONT, 0.625" X 6" X 90"	92" 4-IN-1 BUCKET FOR JCB 212 W/Q-FIT, NEW HOLLAND W/BOE, FERMEC TLK
19299304	\$190.91	EDGE, DOUBLE BEVEL FRONT, 0.75" X 8" X 84"	112" 4-IN-1 BUCKET FOR CASE 821E W/V29
19311603	SOLD OUT	EDGE, DOUBLE BEVEL FRONT, 0.625" X 8" X 86"	86" LOADER BUCKET FOR JD210LE
19311602	\$186.83	EDGE, DOUBLE BEVEL FRONT, 0.75" X 8" X 92"	48" & 92" LOADER BUCKET FOR JD210LE & JD410D; JRB PROFILE 09
52679	\$144.59	EDGE, REVERSIBLE, 0.625" X 8" X 86"	84" 1.6 CU. YD. BUCKET FOR TEREX SKL845 & KOMATSU
19299404	SOLD OUT	EDGE, DOUBLE BEVEL FRONT, 0.75" X 8" X 74"	102" 4-IN-1 BUCKET FOR JD544J & JD544K, CASE 621D, 721E, VOLVO L70
19131211	SOLD OUT	EDGE, BOLT-ON, DOUBLE BEVEL FRONT, 0.625" X 8" X 90"	88" LOADER BUCKET



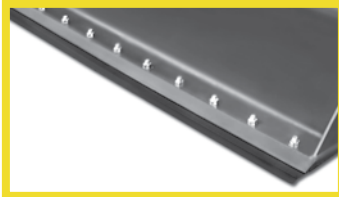
# Clearance Pricing Blowout!

## Cutting Edge Surplus

No other discounts apply. FOB Kronenwetter.

### Takeuchi

Part #	Blow-Out Price	Description	Used In
3000913	\$429.82	EDGE, REVERSIBLE, 1.125" X 9.75" X 6"	REVERSIBLE 60" CUTTING EDGE KIT
C252700	SOLD OUT	SIDE CUTTER, T1156AHX, HENSLEY	TAKEUCHI



Prices subject to change without notice. ©2009 Woods Equipment Company. All rights reserved. WOODS, the Woods logo, & "The Attachment Experts." are trademarks of Woods Equipment Company. All other trademarks, trade names, or service marks not owned by Woods Equipment Company that appear in this brochure are the property of their respective companies or mark holders.